

Contributing companies (2009)	
AMO	Alcon
Avizor	Bausch & Lomb
CIBA Vision	Cooper Vision
Johnson & Johnson Vision Care	Menicon Europe

**Table 1: Contributing companies (2009)**

Country / Region	Abbreviation*
Austria	AT
Belgium & Luxembourg	BE-LU
France	FR
Germany	DE
Italy	IT
Netherlands	NL
Nordic Region	NO-SE-DK-FI
Russia	RU
Switzerland	CH
Spain	ES
United Kingdom & Ireland	UK-IE

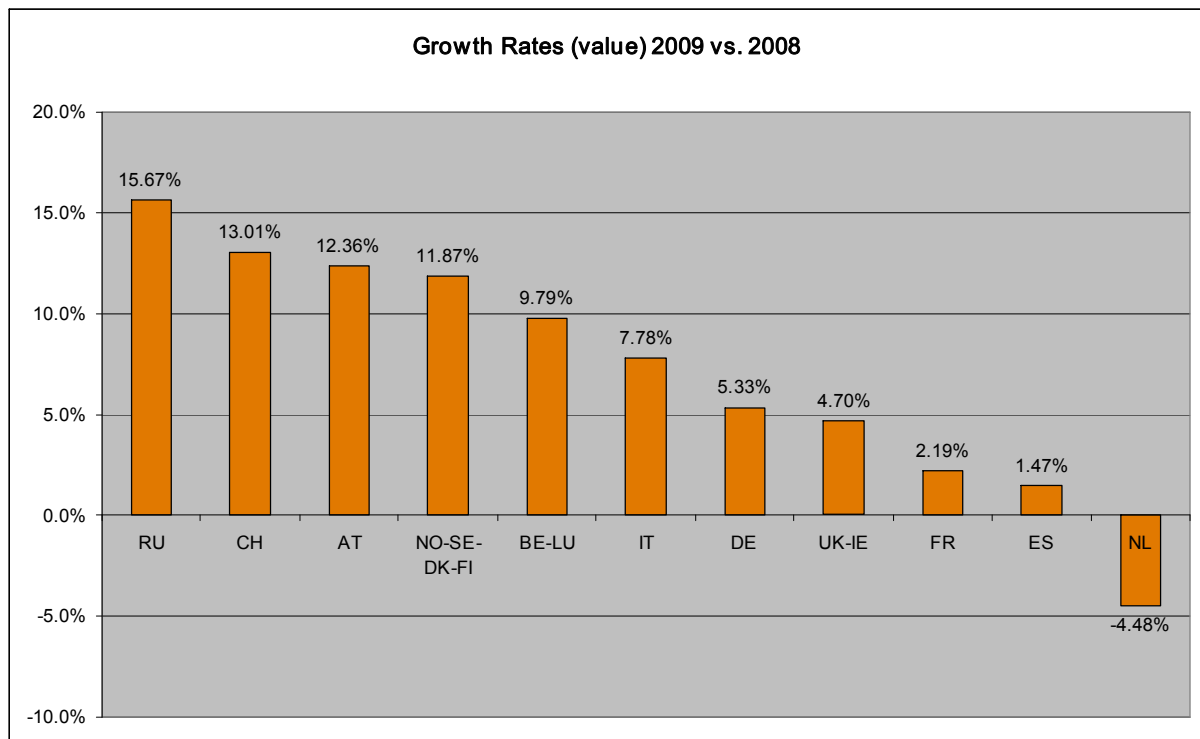
**Table 2: Markets assessed - \*Abbreviations based on Internet top level domains**

Country / Region	Abbreviation*
United Arab Emirates	AE
Czech Republic & Slovakia	CZ-SK
Greece	GR
Hungary	HU
Israel	IL
Kingdom of Saudi Arabia	SA
Poland	PL
Portugal	PT
Romania**	RO
South Africa	ZA
Turkey	TU

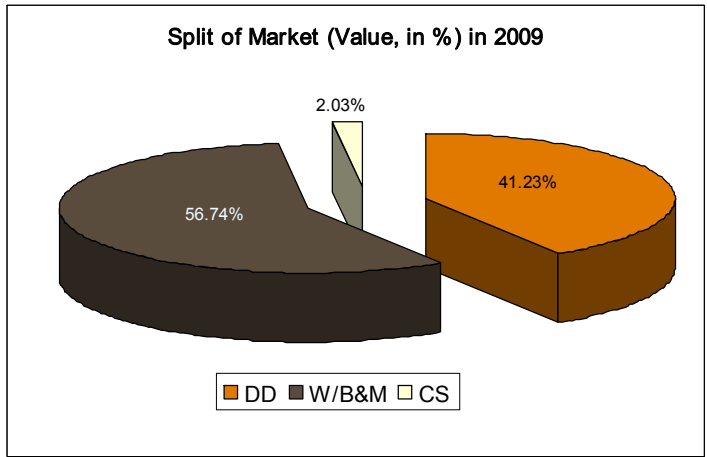
**Table 3: Markets collected but not assessed in this report (\*\*= new in 2009)**

Country	MPS/HP 2009	Change from previous year
AT	0.93	-3.6%
BE-LU	2.27	6.5%
CH	1.17	-6.0%
DE	1.26	3.1%
ES	3.71	4.6%
FR	3.83	8.8%
IT	2.32	4.5%
NL	3.49	-6.9%
NO-SE-DK-FI	6.88	5.0%
UK-IE	4.46	13.6%

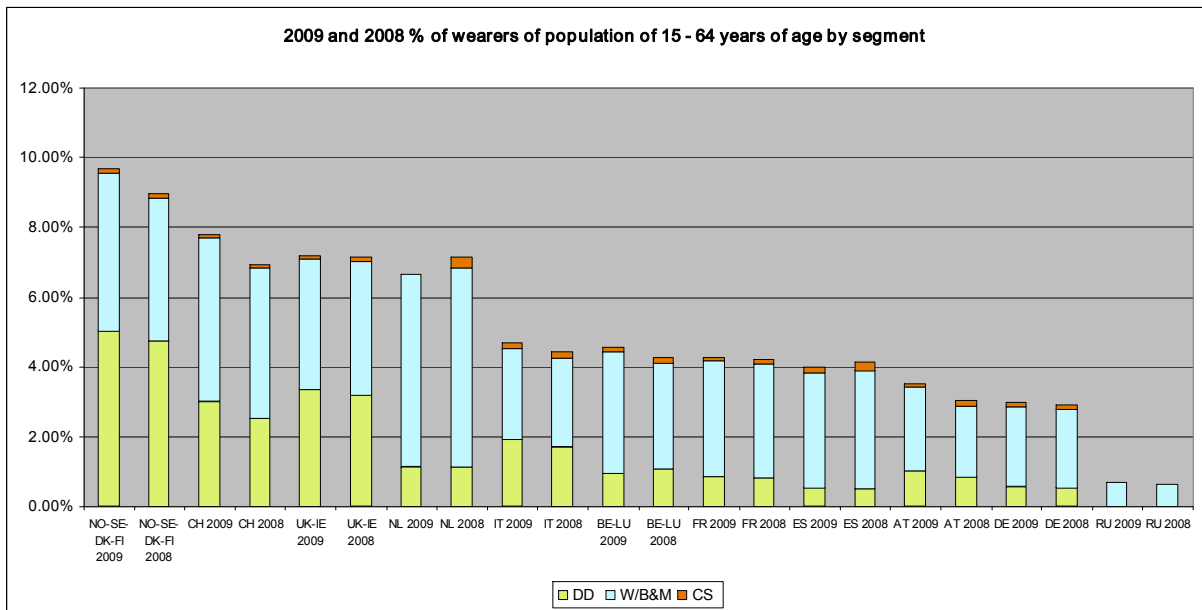
Table 4: Size of MPS segment versus the HP one, by country.



**Figure 1:** Lens Market Value Growth rates across the 11 assessed markets (NL had one segment less in 2009 than in 2008 (CS), hence an artificially strong decline, true change of segments with values in 2008 and 2009 is -0.15%)



**Figure 2: Split of Market (all 22 collected, value, in %) 2009**



**Figure 3: DD-W/B&M-CS wearers in population 15 - 64 years of age 2009 vs. 2008 (for values of 2009 see table 4)**

Soft lens wearer base values for each country or region assessed, presented by lens category and in comparison to 2008. Penetration expressed as % of total population of 15 to 64 years of age.

		Wearer % DD 2009	Wearers % W/B- W&M 2009	wearers % CS 2009	Total % 2009
Nordic Region	NO-SE-DK-FI	5.04%	4.54%	0.11%	9.69%
Switzerland	CH	3.00%	4.70%	0.08%	7.77%
United Kingdom & Ireland	UK-IE	3.36%	3.74%	0.09%	7.19%
Netherlands	NL	1.15%	5.51%	NA	6.66%
Italy	IT	1.93%	2.59%	0.18%	4.69%
Belgium & Luxembourg	BE-LU	0.96%	3.48%	0.11%	4.55%
France	FR	0.84%	3.33%	0.10%	4.27%
Spain	ES	0.53%	3.31%	0.16%	3.99%
Austria	AT	1.01%	2.40%	0.12%	3.53%
Germany	DE	0.56%	2.29%	0.11%	2.96%
Russia	RU	NA	0.68%	NA	0.68%

Table 5 Wearer Penetration by segment for population 25 - 64 years of age (NA = not available)

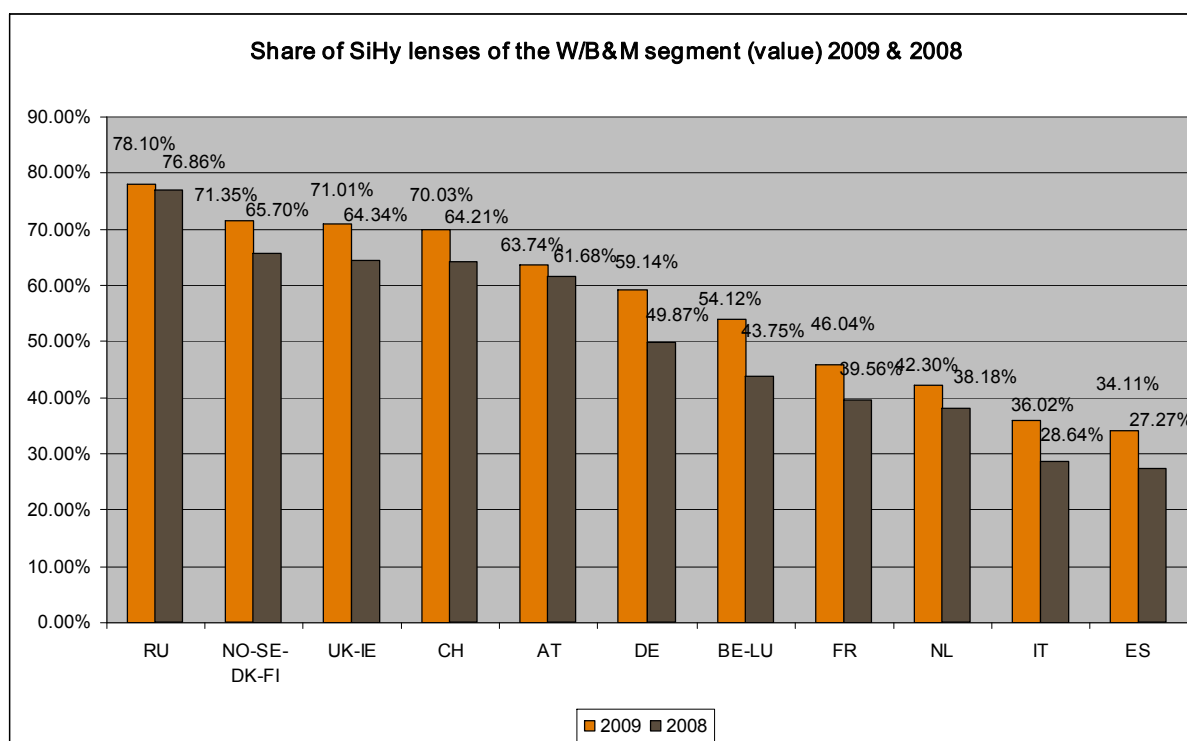
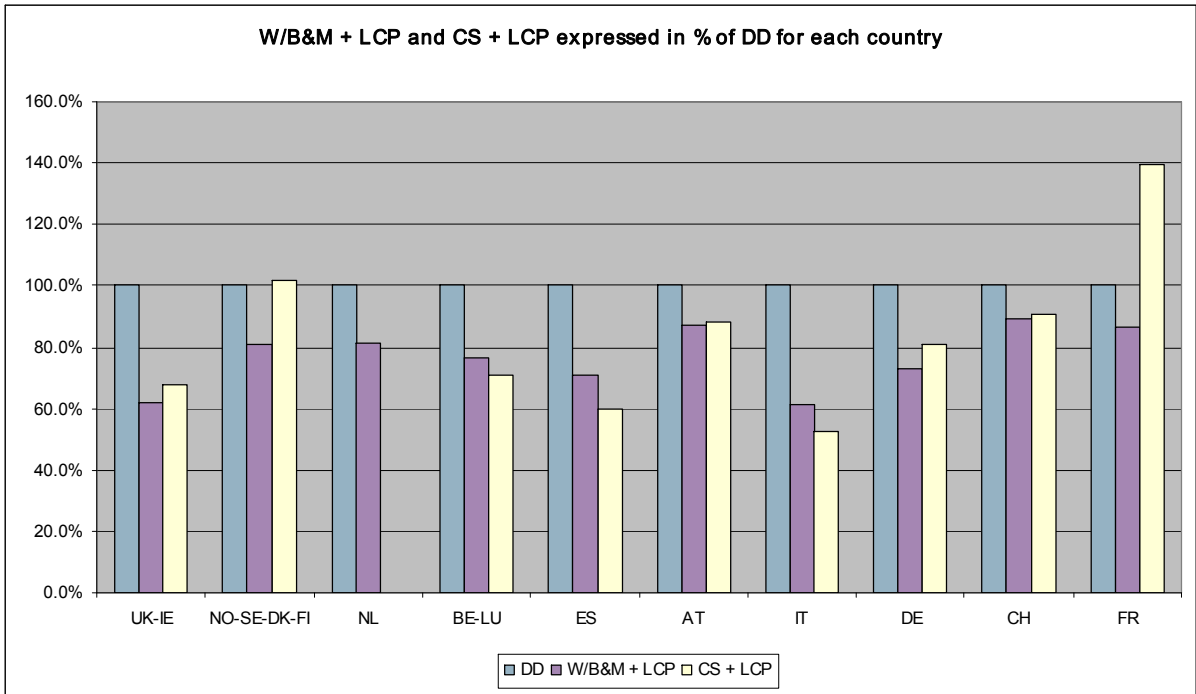


Figure 4: Silicone-Hydrogels as % of W/B&M 2009 vs. 2008



**Figure 5:** Comparison of the yearly cost of the different systems to the ECP, relative to DD, per Country, includes lens care for W/B&M and CS system (no data for RU)

**CAUTION:** Lens Care Products not well covered in UK-IE, IT and ES (important local manufacturers do not participate in data collection)